

**CONDOMINIUM SUBDIVISION PLAN
GOLF VILLAS AT WATERSTONE**

FIRST AMENDMENT TO
 OAKLAND COUNTY CONDOMINIUM
 SUBDIVISION PLAN NO. 1298
 EXHIBIT B TO THE MASTER DEED OF

ATTENTION: COUNTY REGISTER OF DEEDS

THE CONDOMINIUM PLAN NUMBER MUST BE ASSIGNED IN SEQUENCE. WHEN A NUMBER HAS BEEN ASSIGNED TO THIS PROJECT IT MUST BE PROPERLY SHOWN IN THE TITLE OF THIS SHEET AND IN THE SURVEYOR'S CERTIFICATE ON SHEET 3.

GOLF VILLAS AT WATERSTONE

OXFORD TOWNSHIP, OAKLAND COUNTY, MICHIGAN

CONDOMINIUM DESCRIPTION

Legal Description of a 22.99 acre parcel of land located in Section 21, T5N, R10E, Township of Oxford, Oakland County, Michigan.

Commencing at the SE corner of Section 21, T5N, R10E, Oxford Township, Oakland County, Michigan, thence S 88°06'21" W (M), N 89°16'35" W (R), along the South line of said Section 21, also being the centerline of Seymour Lake Road 766.64 feet; thence N 01°02'54" W 396.00 feet; thence S 88°06'21" W 632.13 feet to the east boundary of said Section 21, as recorded in Liber 2235, Pages 214 and 232, Oakland County Records, thence along the East line of the said Detroit Edison easement; the following two (2) courses: N 01°33'29" W 669.82 feet; N 43°25'25" W 669.83 feet to the South line of a parcel of land conveyed to the Detroit Edison Company and recorded in Liber 1538, Page 540, Oakland County Records, thence S 85°57'39" E 101.07 feet to the North line of the said Edison Lands and the POINT OF BEGINNING OF Parcel "A";

thence S 89°57'39" W 130.00 feet along the North line of said Edison lands; 89.40 feet; thence N 37°45'09" E 380.35 feet; thence N 40°31'08" E 176.43 feet; thence N 52°09'52" E 176.90 feet; thence S 85°25'15" E 501.18 feet; thence S 12°54'21" E 89.97 feet; thence Southwesterly 236.37 feet in the arc of a circular curve Northwesterly, having a radius of 540.00 feet, a central angle of 234.31 feet; thence S 37°50'50" E 134.83 feet; thence Southwesterly 21.05 feet in the arc of a circular curve concave Southwesterly, having a radius of 557.00 feet, a central angle of 0°15'36", and a chord which bears S 67°44'01" W 245.18 feet; thence S 55°22'59" W 88.85 feet; thence S 42°22'49" W 88.85 feet; thence S 28°21'41" W 88.85 feet; thence S 14°20'33" W 88.85 feet; thence S 01°38'33" W 88.87 feet to the North line of a parcel of land conveyed to the Detroit Edison Company and recorded in Liber 1538, Page 540, Oakland County Records; thence along the said North line the following two (2) courses:

S 88°38'27" W 282.90 feet
 S 88°28'27" W 273.53 feet to the POINT OF BEGINNING, and containing 13.53 acres of land, more or less.

Together with:

Commencing at the SE corner of Section 21, T5N, R10E, Oxford Township, Oakland County, Michigan, thence S 88°06'21" W (M), N 89°16'35" W (R), along the South line of said Section 21, also being the centerline of Seymour Lake Road 766.64 feet; thence N 01°02'54" W 396.00 feet; thence S 88°06'21" W 632.13 feet to the East line of a 90 foot wide Detroit Edison easement recorded

in Liber 2235, Pages 214 and 232, Oakland County Records, thence along the East line of the said Detroit Edison easement the following two (2) courses: N 01°33'29" W 669.82 feet; N 43°25'25" W 669.83 feet to the South line of a parcel of land conveyed to the Detroit Edison Company and recorded in Liber 1538, Page 540, Oakland County Records, thence S 85°57'39" E 101.07 feet to the North line of the said Edison Lands; thence along the said North line the following two (2) courses: N 89°57'39" E 373.53 feet; N 88°38'27" E 282.90 feet; thence N 01°38'33" W 88.87 feet; thence N 14°20'33" W 88.85 feet; thence S 01°38'33" W 88.85 feet; thence N 52°09'52" E 176.90 feet; thence N 40°31'08" E 176.43 feet; thence N 37°45'09" E 380.35 feet; thence S 89°57'39" E 89.95 feet to the POINT OF BEGINNING OF Parcel "B";

thence Northwesterly 31.98 feet in the arc of a circular curve concave Southwesterly, having a radius of 1043.00 feet, a central angle of 0°15'36", and a chord which bears N 55°58'09" W, a distance of 31.98 feet; thence N 37°50'50" W 134.83 feet; thence Northwesterly 198.94 feet in the arc of a circular curve concave Northwesterly, having a radius of 457.00 feet, a central angle of 24°58'30", and a chord which bears S 22°22'36" W, a distance of 197.57 feet; thence N 71°39'31" E 289.94 feet; thence N 85°25'15" E 248.75 feet; thence N 71°39'31" E 99.50 feet; thence N 85°25'17" E 98.79 feet; thence N 80°00'00" E 163.16 feet to the start of an intermediate traverse line along the S 80°00'00" W 20.00 feet from the said water's edge; thence along the said intermediate traverse line the following two (2) courses:

S 06°05'11" E 298.56 feet
 S 10°14'48" W 100.00 feet to the end of the intermediate traverse line, the said end point being N 72°33'28" W 20.00 feet from the water's edge of Lake Dunbar;

thence N 72°33'28" W 83.89 feet
 thence N 59°04'38" W 18.85 feet
 thence N 81°02'12" W 141.14 feet
 thence S 82°01'17" W 161.07 feet
 thence S 82°44'01" W 449.99 feet to the POINT OF BEGINNING, and containing 9.46 acres of land, more or less, including all that land lying between the intermediate traverse line at the water's edge of Lake Dunbar.

Being a part of Sections 21 and 22, T5N, R10E, and containing a total of 22.99 acres of land, more or less, being subject to easements and restrictions of record, if any.

DEVELOPER

OXFORD GOLF VILLAS LLC
 46600 ROMEO PLANK RD.
 SUITE 5
 MACOMB, MI. 48044

SURVEYOR

MIDWESTERN CONSULTING, INC.
 3615 PLAZA DRIVE
 ANN ARBOR, MICHIGAN 48108

ARCHITECT

BRYCE & PALAZZOLA
 ARCHITECTS AND ASSOCIATES, INC.
 6018 WEST MAPLE ROAD, SUITE 811
 WEST BLOOMFIELD, MI. 48322
 TELE: 248-855-3150

SHEET INDEX

- * SHEET 1 COVER SHEET
- * SHEET 2 SURVEY AND FLOOD PLAIN
- * SHEET 3 EASEMENT PLAN
- * SHEET 4 EASEMENT PLAN
- * SHEET 5 EASEMENT PLAN
- * SHEET 6 UTILITY PLAN
- * SHEET 7 UTILITY PLAN
- * SHEET 8 UTILITY PLAN
- * SHEET 9 SITE PLAN
- * SHEET 10 SITE PLAN
- * SHEET 11 SITE PLAN
- * SHEET 12 BASEMENT PLAN
- * SHEET 13 FLOOR PLAN
- * SHEET 14 SECTION A-A

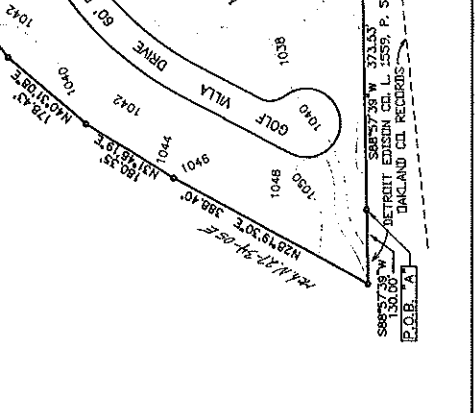
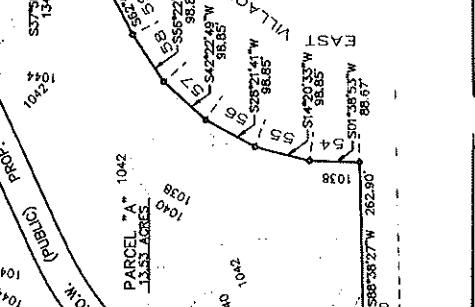
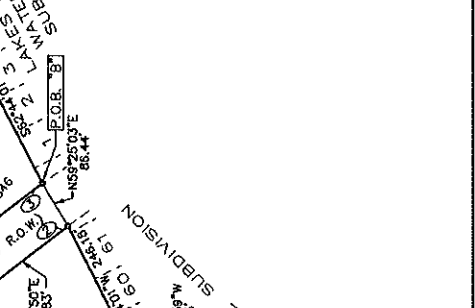
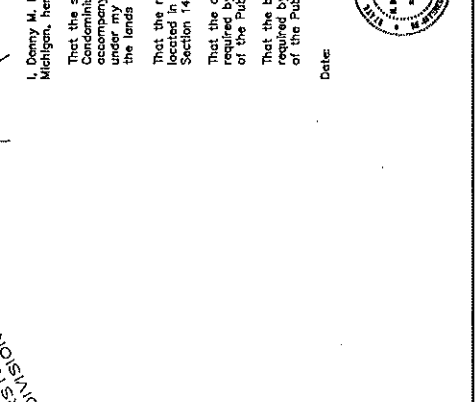
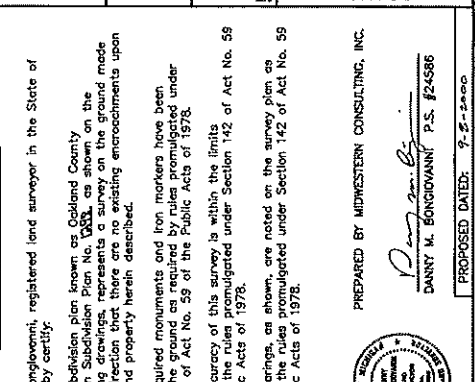
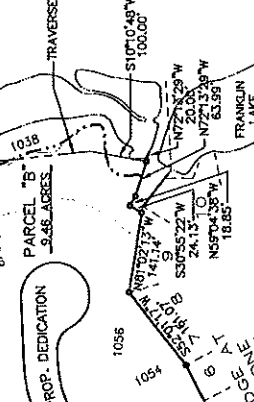
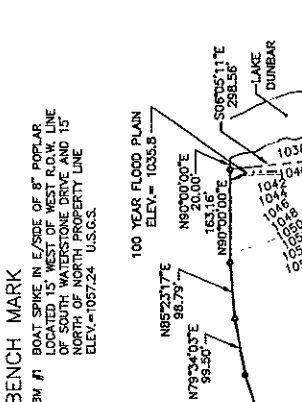
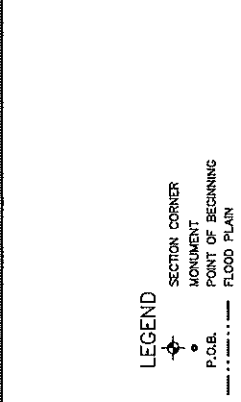
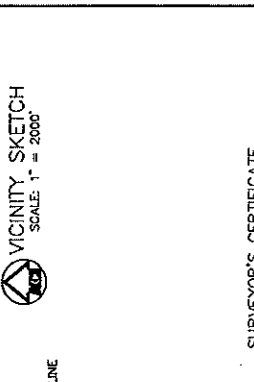
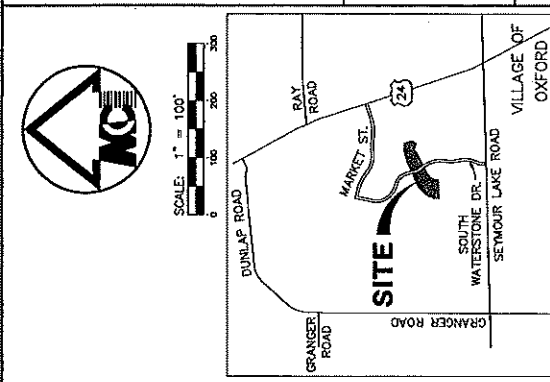
PREPARED BY MIDWESTERN CONSULTING, INC.



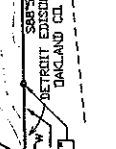
NOTE: THE ASTERISK (*) INDICATES A NEW OR AMENDED SHEET. THE SHEETS WITH THIS SUPPLEMENTAL ARE TO BE REPLACED OR BE SUPPLEMENTAL TO THOSE SHEETS PREVIOUSLY RECORDED.

DANNY W. BONGIOVANNI P.S. #24586

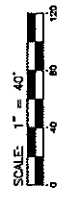
PROPOSED, DATED: AUG. 6, 2001



PREPARED BY: MIDWESTERN CONSULTING, INC.
 DANNY M. BONGIOVANNI P.S. #24586
 PROPOSED DATED: 9-5-2000



Date:



NOTES:
 1) UNITS 1-54 MUST BE BUILT.

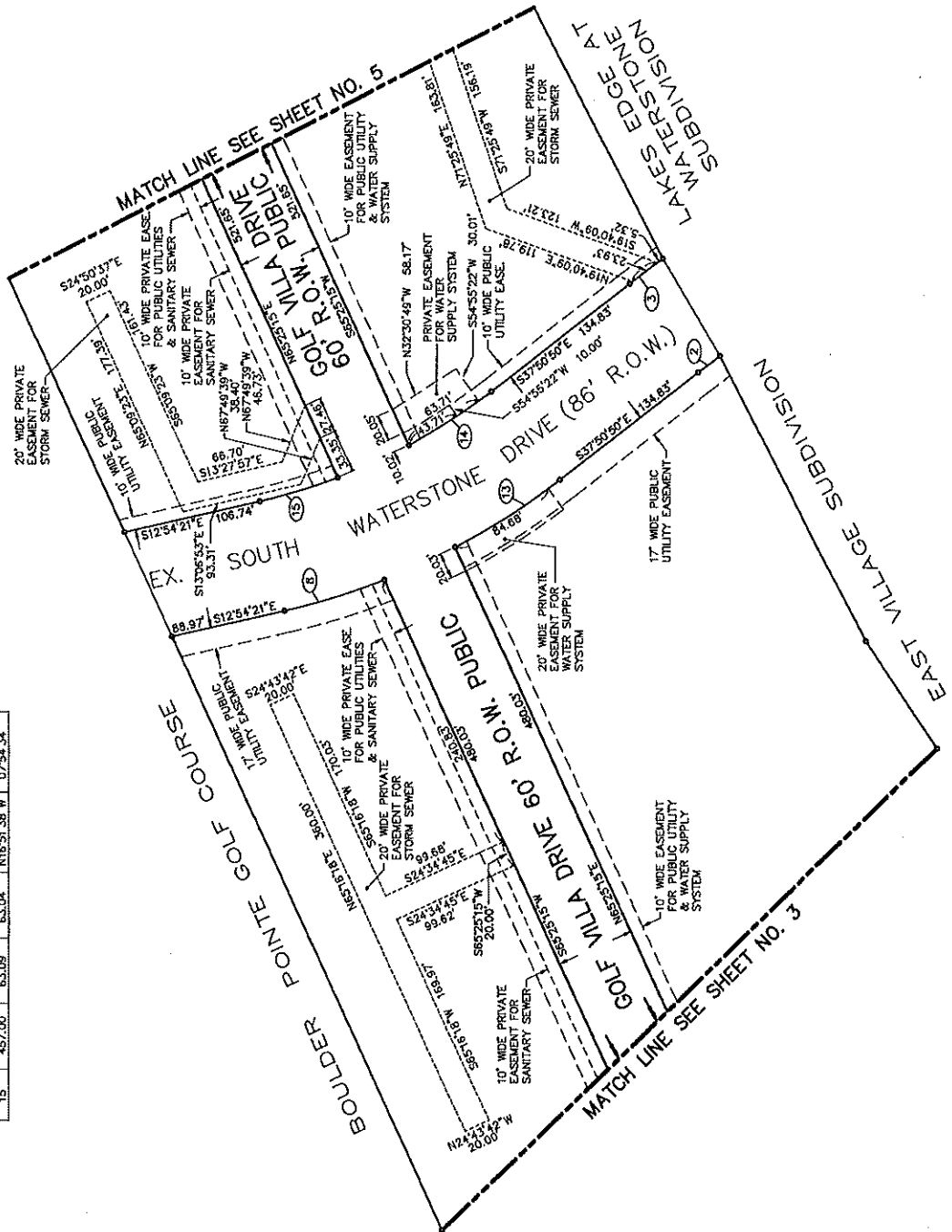
- LEGEND**
- MONUMENT
 - PUBLIC UTILITY EASEMENT
 - SANITARY SEWER EASEMENT
 - STORM SEWER EASEMENT
 - WATERMAIN EASEMENT

NOTE:
 LOCATION OF UTILITIES ARE APPROXIMATE
 AND FINAL LOCATIONS WILL BE SHOWN ON
 AS BUILT DRAWINGS.

PREPARED BY: **MIDWESTERN CONSULTING, INC.**
 DANNY K. BONGIOVANNI, P.E. #24586
 PROPOSED DATED: AUG. 6, 2001

RIGHT OF WAY CURVE DATA

CURVE	RADIUS	LENGTH	CHORD	BEARING	DELTA
1	827.00	21.05	N73°30'27\"	017°51'36\"	
2	1045.00	31.88	S59°58'05\"	014°02'24\"	
3	545.00	66.97	S77°09'26\"	08°30'23\"	
11	437.00	52.21	N33°05'23\"	09°00'03\"	
12	437.00	52.21	N33°05'23\"	09°00'03\"	
13	437.00	52.21	N33°05'23\"	09°00'03\"	
14	437.00	52.21	N33°05'23\"	09°00'03\"	
15	437.00	52.21	N33°05'23\"	09°00'03\"	





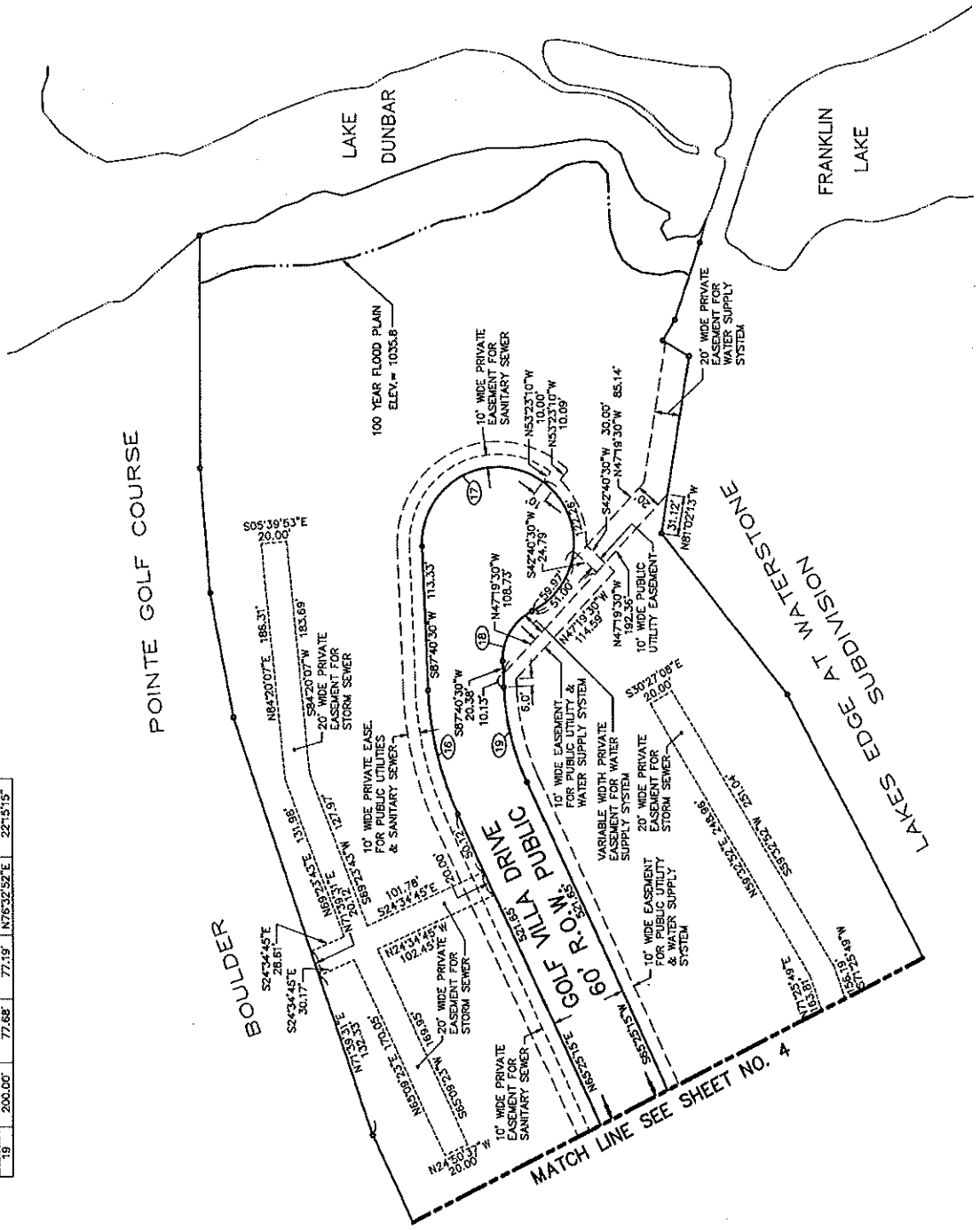
NOTES:
 1) UNITS 1-54 MUST BE BUILT.

- LEGEND**
- MONUMENT
 - PUBLIC UTILITY EASEMENT
 - SANITARY SEWER EASEMENT
 - STORM SEWER EASEMENT
 - WATERMAIN EASEMENT

NOTE:
 LOCATION OF UTILITIES ARE APPROXIMATE
 AND FINAL LOCATIONS WILL BE SHOWN ON
 "AS BUILT" DRAWINGS.

RIGHT OF WAY CURVE DATA

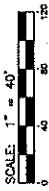
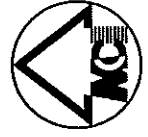
CURVE	RADIUS	LENGTH	CHORD	BEARING	DELTA
16	280.00'	100.99'	100.35'	N76°32'52"E	22°15'15"
17	60.00'	257.28'	100.82'	N30°31'02"E	245°24'03"
18	42.00'	48.15'	45.56'	S59°28'58"E	65°24'03"
19	200.00'	77.68'	77.19'	N76°32'52"E	22°15'15"



MATCH LINE SEE SHEET NO. 4



PREPARED BY: MIDWESTERN CONSULTING, INC.
 DANNY M. BONGIOVANNI P.S. #24586
 PROPOSED DATED: AUG. 6, 2007

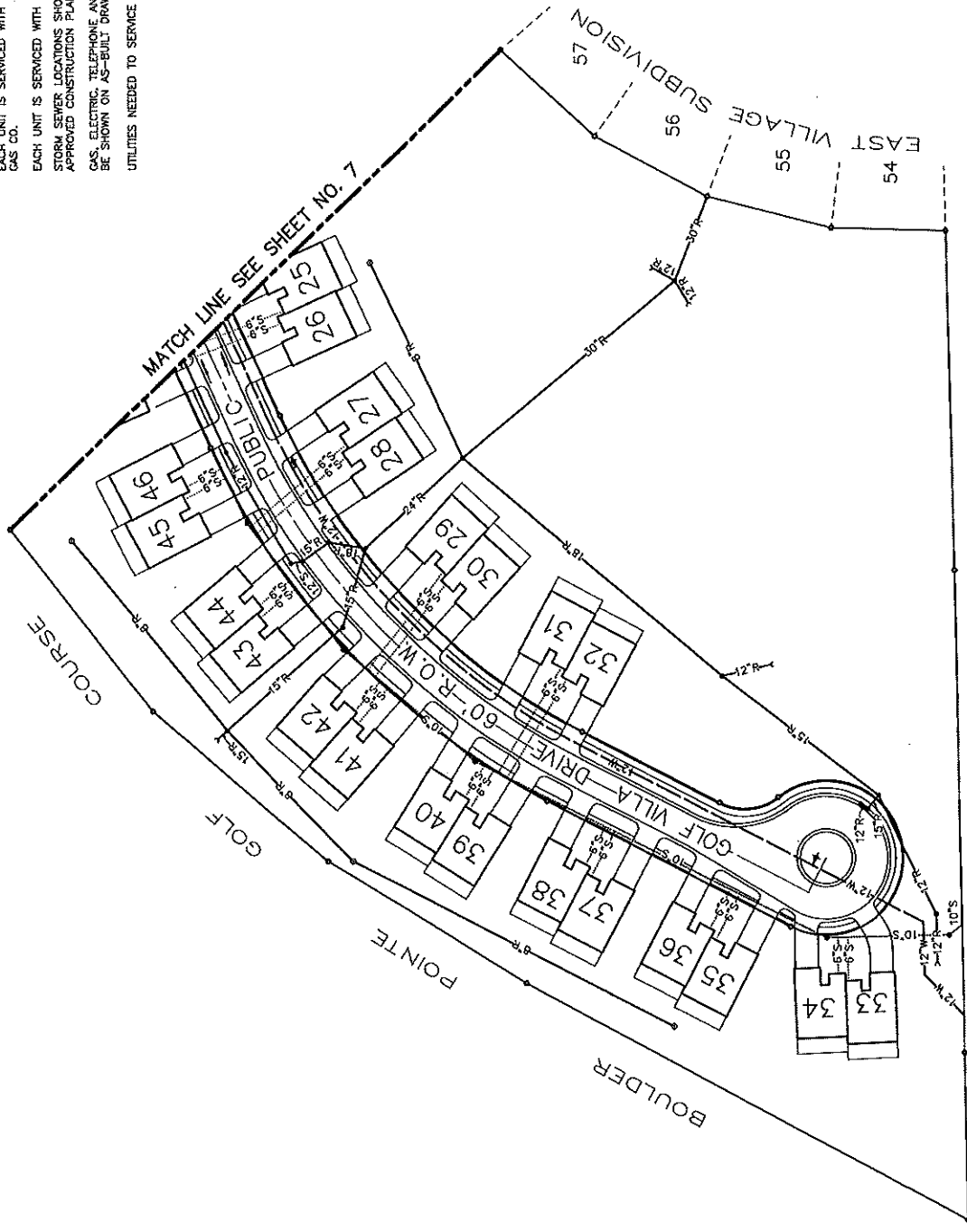


LEGEND

- MONUMENT
- PROPOSED MANHOLE
- PROPOSED CATCH BASIN
- ⊕ PROPOSED HYDRANT
- ⊙ PROPOSED GATE VALVE IN WELL
- PROP. CLEANOUT
- 8" R. PROPOSED STORM SEWER
- 10" S. PROPOSED SANITARY SEWER
- 12" W. PROPOSED WATERMAIN

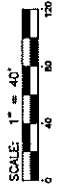
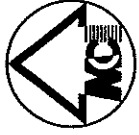
NOTE:
 LOCATION OF UTILITIES ARE APPROXIMATE
 AND FINAL LOCATIONS WILL BE SHOWN ON
 "AS BUILT" DRAWINGS.

NOTES:
 EACH UNIT IS SERVICED WITH ELECTRIC BY DETROIT EDISON CO.
 AND WITH TELEPHONE BY AMERITECH TELEPHONE CO.
 EACH UNIT IS SERVICED WITH GAS BY MICHIGAN CONSOLIDATED
 GAS CO.
 EACH UNIT IS SERVICED WITH CABLE TELEVISION BY MEDAGINE.
 STORM SEWER LOCATIONS SHOWN ARE OBTAINED FROM
 APPROVED CONSTRUCTION PLANS.
 GAS, ELECTRIC, TELEPHONE AND CABLE TELEVISION LINES WILL
 BE SHOWN ON AS-BUILT DRAWINGS.
 UTILITIES NEEDED TO SERVICE UNITS 1-54 MUST BE BUILT.



PREPARED BY MIDWESTERN CONSULTING, INC.
 DANNY M. BONGIOVANNI P.E. #24586
 PROPOSED DATE: 7-9-2009

DETROIT EDISON CO. I 18ER 1559, PAGE 543 OAKLAND COUNTY RECORDS



NOTES:
 EACH UNIT IS SERVICED WITH ELECTRIC BY DETROIT EDISON CO.
 AND WITH TELEPHONE BY AMERITECH TELEPHONE CO.
 EACH UNIT IS SERVICED WITH GAS BY MICHIGAN CONSOLIDATED
 GAS CO.
 EACH UNIT IS SERVICED WITH CABLE TELEVISION BY MEDIAONE.
 STORM SEWER LOCATIONS SHOWN ARE OBTAINED FROM
 APPROVED CONSTRUCTION PLANS.
 GAS, ELECTRIC, TELEPHONE AND CABLE TELEVISION LINES WILL
 BE SHOWN ON AS-BUILT DRAWINGS.
 UTILITIES NEEDED TO SERVICE UNITS 1-54 MUST BE BUILT.

LEGEND

- MONUMENT
- PROPOSED MAINHOLE
- PROPOSED CATCH BASIN
- ⊕ PROPOSED HYDRANT
- ⊙ PROPOSED GATE VALVE IN WELL
- PROP. CLEANOUT
- 8" PROPOSED STORM SEWER
- 10" PROPOSED SANITARY SEWER
- 12" PROPOSED WATERMAIN

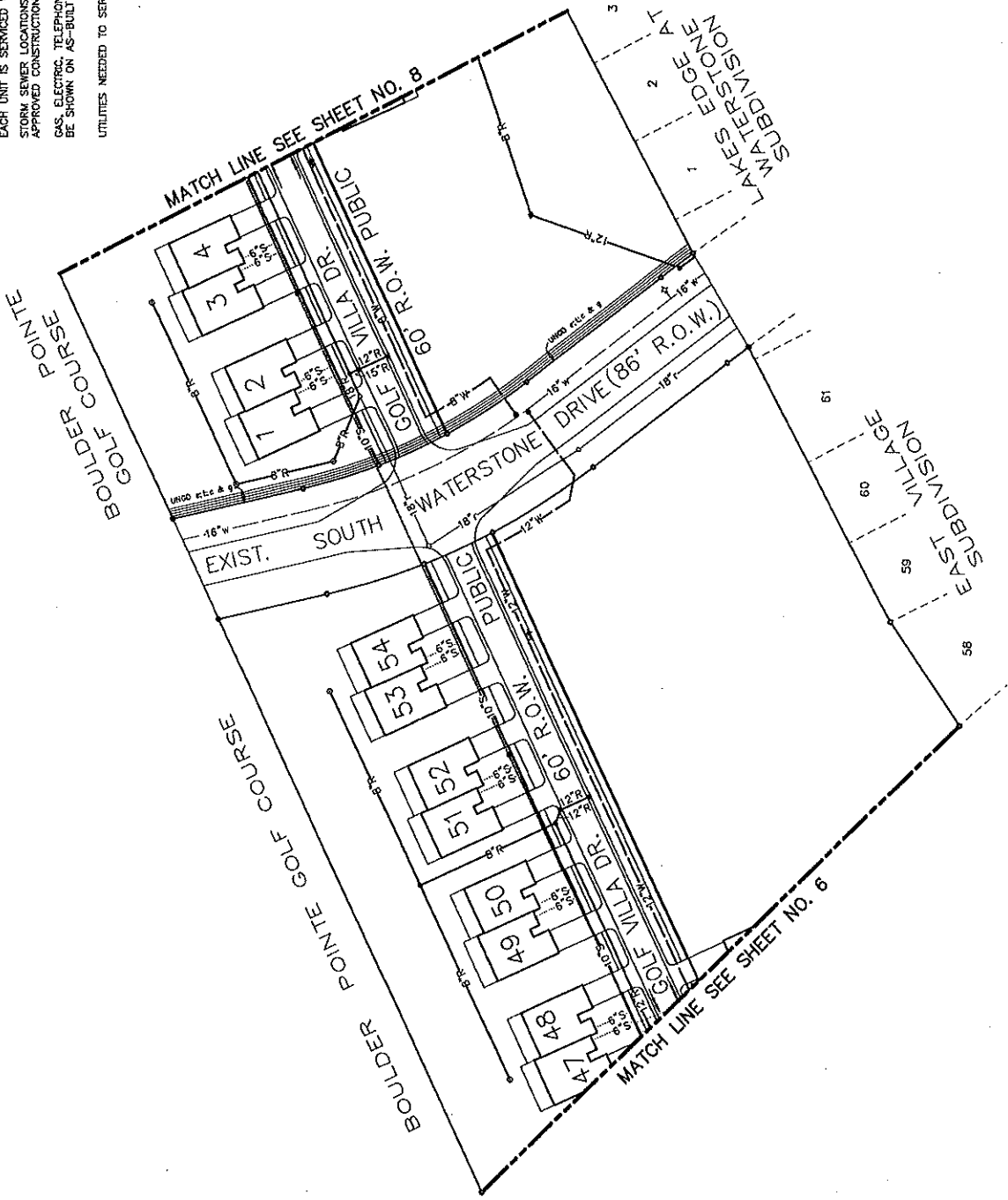
NOTE:
 LOCATION OF UTILITIES ARE APPROXIMATE
 AND FINAL LOCATIONS WILL BE SHOWN ON
 "AS BUILT" DRAWINGS.

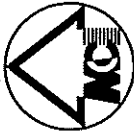


PREPARED BY MIDWESTERN CONSULTING, INC.

DANNY M. BONGIOVANNI, P.E.
 LICENSE NO. 24586

PROPOSED DATE: 7-2-2000



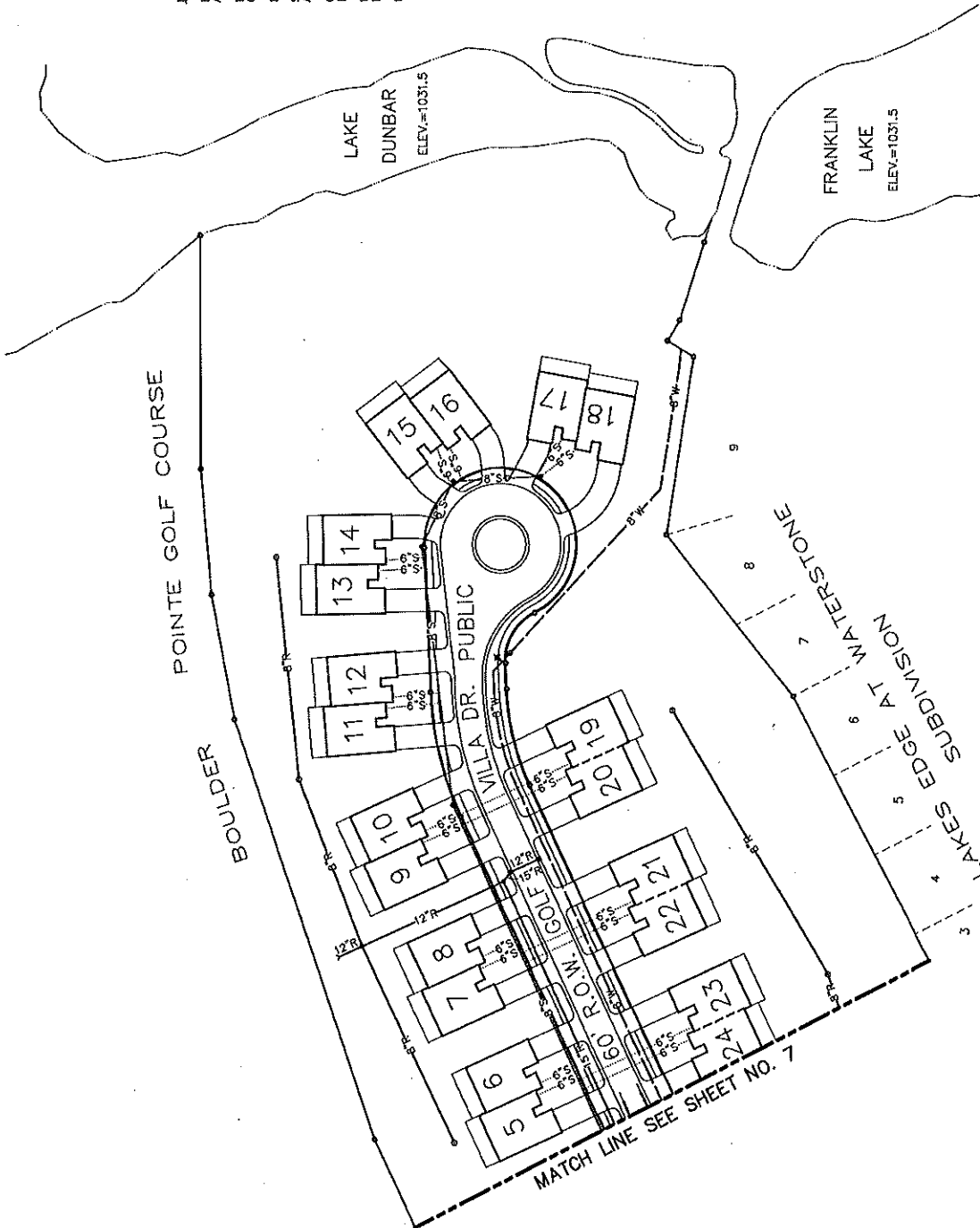


NOTES:
 EACH UNIT IS SERVICED WITH ELECTRIC BY DETROIT EDISON CO.
 AND WITH TELEPHONE BY AMERITECH TELEPHONE CO.
 EACH UNIT IS SERVICED WITH GAS BY MICHIGAN CONSOLIDATED
 GAS CO.
 EACH UNIT IS SERVICED WITH CABLE TELEVISION BY MEDAONE
 STORM SEWER LOCATIONS SHOWN ARE OBTAINED FROM
 APPROVED CONSTRUCTION PLANS.
 GAS, ELECTRIC, TELEPHONE AND CABLE TELEVISION LINES WILL
 BE SHOWN ON AS-BUILT DRAWINGS.
 UTILITY METER LOCATIONS WILL BE SHOWN ON AS-BUILT
 DRAWINGS.
 UTILITIES NEEDED TO SERVICE UNITS 1-54 MUST BE BUILT.

LEGEND

- MONUMENT
- PROPOSED MANHOLE
- PROPOSED CATCH BASIN
- ✦ PROPOSED HYDRANT
- ⊙ PROPOSED GATE VALVE IN WELL
- ⊖ PROP. CLEANOUT
- 8" PROPOSED STORM SEWER
- 10" PROPOSED SANITARY SEWER
- 12" PROPOSED WATERMAIN

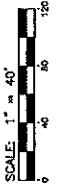
NOTE:
 LOCATION OF UTILITIES ARE APPROXIMATE
 AND FINAL LOCATIONS WILL BE SHOWN ON
 "AS BUILT" DRAWINGS.



PREPARED BY: MIDWESTERN CONSULTING, INC.

DANNY M. BONGIOVANNI P.E. #24555

PROPOSED DATED: 9-9-2000



- LEGEND**
- SET MONUMENT
 - ▨ GENERAL COMMON ELEMENT
 - ▭ LIMITS OF OWNERSHIP
 - Ⓢ INDICATES BUILDING NUMBER COORDINATE LOCATION
 - D-34 DRIVEWAY LIMITED COMMON ELEMENT
 - G-34 GARAGE LIMITED COMMON ELEMENT
 - PA-34 PATIO AREA LIMITED COMMON ELEMENT



PREPARED BY MIDWESTERN CONSULTING, INC.
 DANNY M. BONCIWANNI P.E. #24586
 PROPOSED DATED: 9-8-2008

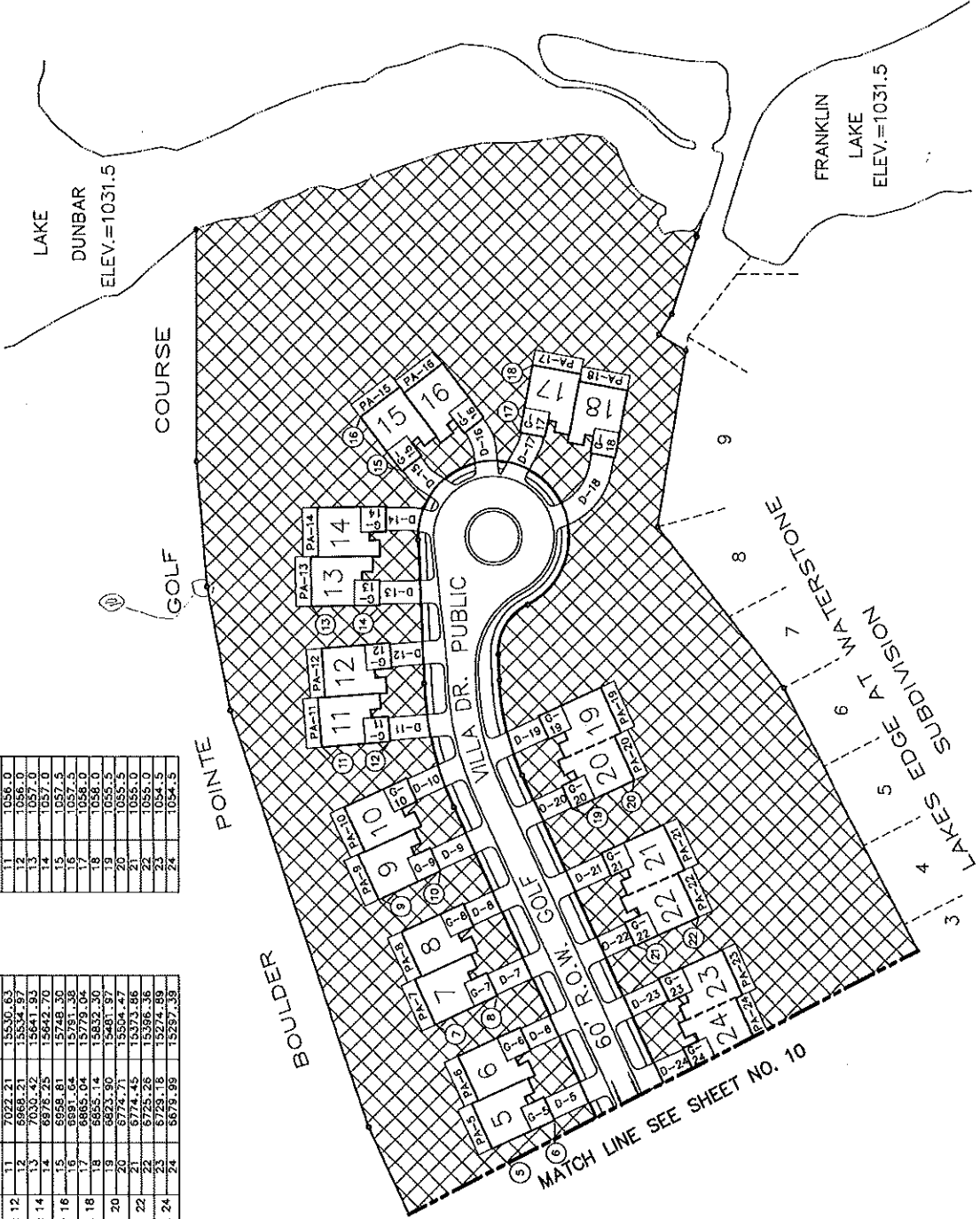
NOTES:
 SEE SHEETS 13, 14 & 15 FOR BUILDING DETAILS.
 BEARINGS BASED ON MICHIGAN DEPARTMENT OF TRANSPORTATION PLANS; PROJECT NO. 63-32; CONTROL SECTION 6312.
 UNITS 1 THRU 54 MUST BE BUILT.

FINISH FLOOR ELEV.

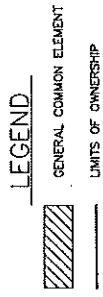
UNIT NO.	ELEV.
5	1054.0
6	1054.0
7	1055.0
8	1055.0
9	1055.5
10	1055.5
11	1056.0
12	1056.0
13	1057.0
14	1057.0
15	1057.5
16	1057.5
17	1058.0
18	1058.0
19	1058.5
20	1058.5
21	1059.0
22	1059.0
23	1054.5
24	1054.5

BUILDING CORNER COORDINATES

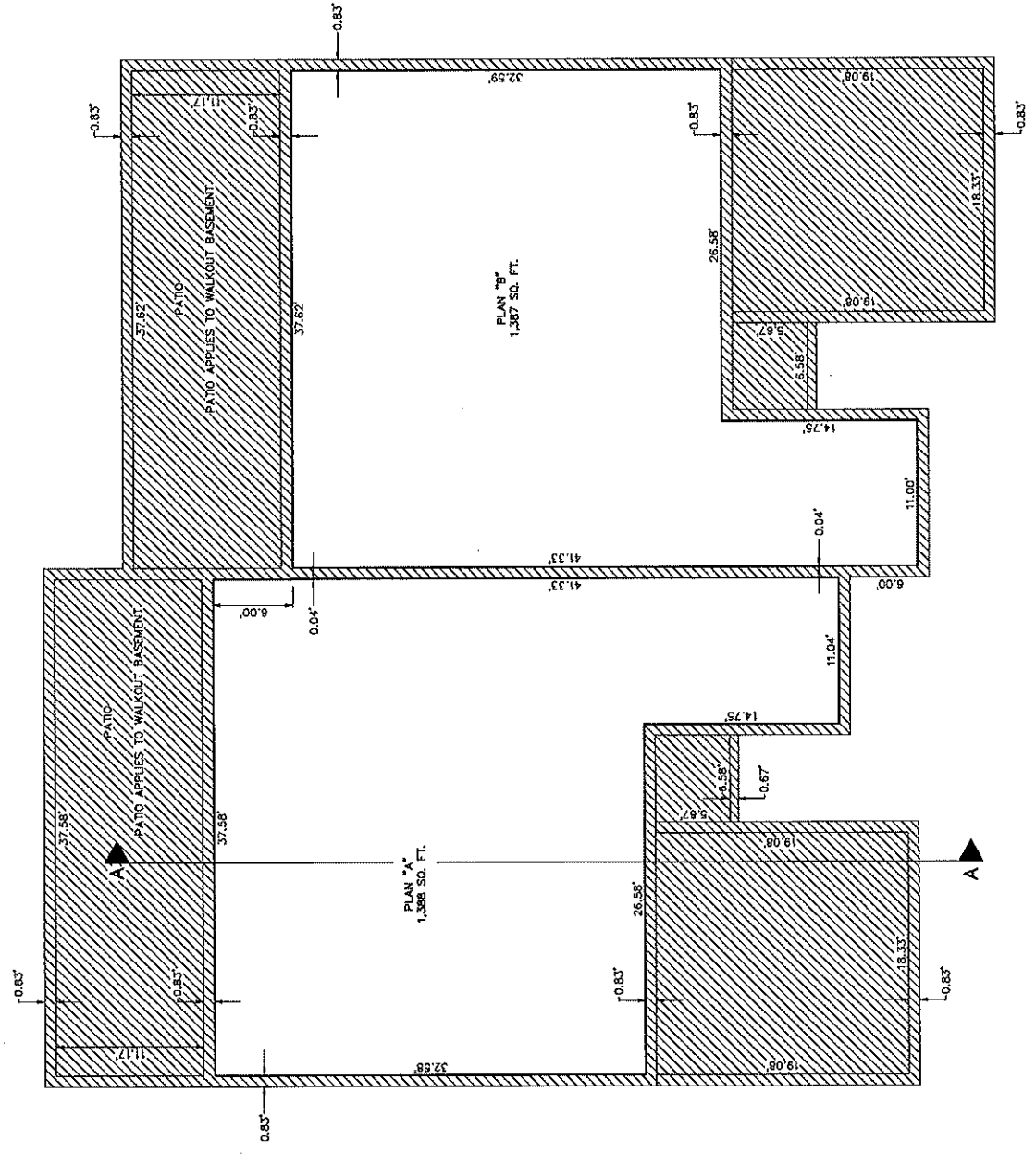
UNIT NO.	POINT	NORTH	EAST
5	5888.02	15273.41	
5 & 6	6638.78	15235.99	
6	6638.78	15235.99	
7 & 8	6632.89	15311.46	
8	6632.89	15311.46	
9 & 10	6677.50	15410.35	
9	6677.50	15410.35	
10	6628.30	15433.01	
11 & 12	6222.21	15330.63	
11	6222.21	15330.63	
12	7035.42	15641.81	
13 & 14	6678.25	15642.70	
13	6678.25	15642.70	
14	6657.0	15657.0	
15 & 16	6658.81	15748.30	
15	6658.81	15748.30	
16	6691.64	15791.36	
17 & 18	6665.04	15779.04	
17	6665.04	15779.04	
18	6655.14	15832.30	
19 & 20	6623.90	15481.97	
19	6623.90	15481.97	
20	6774.71	15594.42	
21 & 22	6725.26	15368.36	
21	6725.26	15368.36	
22	6729.18	15274.89	
23 & 24	6679.99	15297.39	
23	6679.99	15297.39	
24	6679.99	15297.39	



MATCH LINE SEE SHEET NO. 10

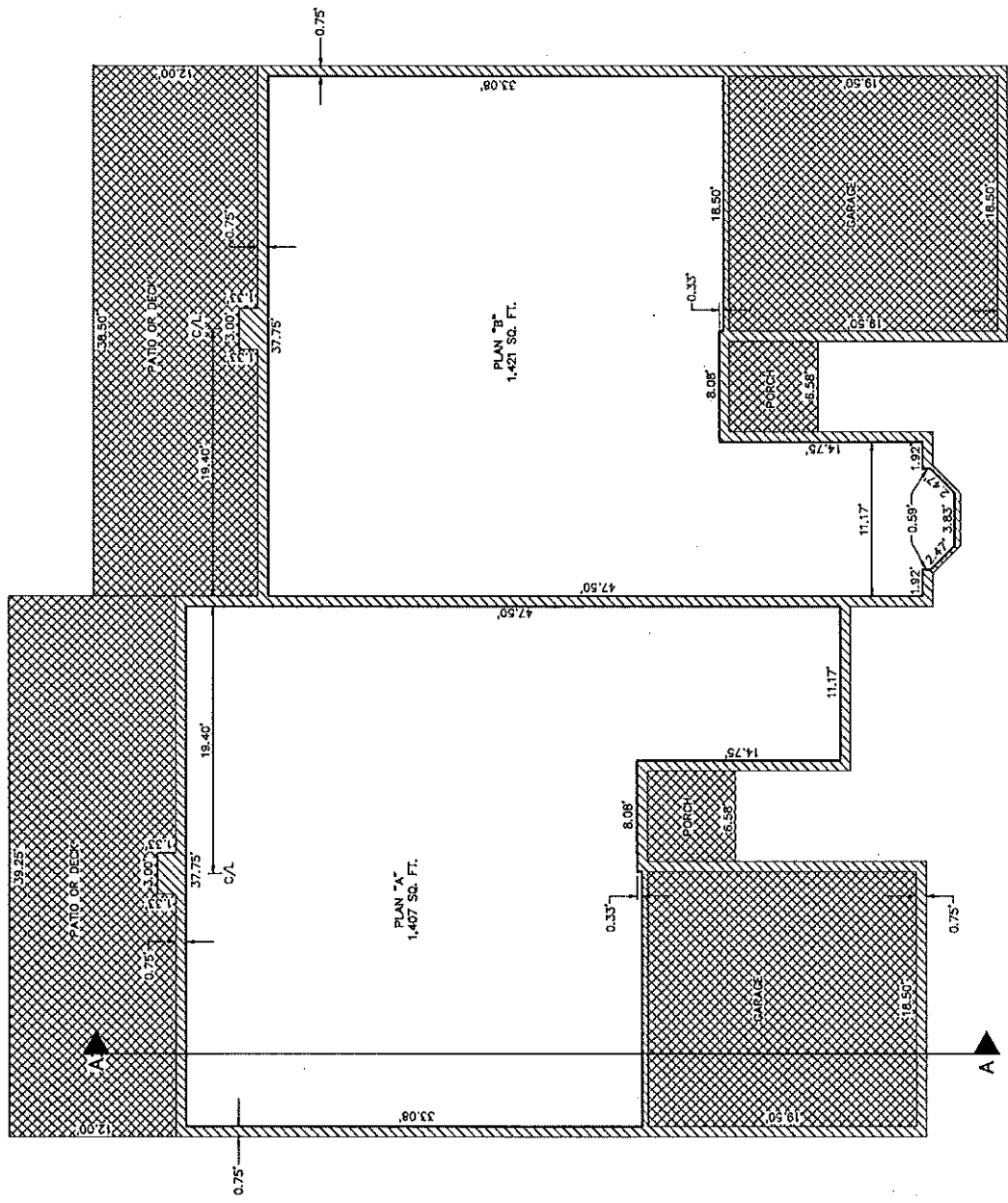


- NOTES**
1. ALL CORNERS ARE 90°.
 2. UNITS 15,16,17,18,39,40,41,42,43,44,45,46 HAVE WALKOUT BASEMENTS.

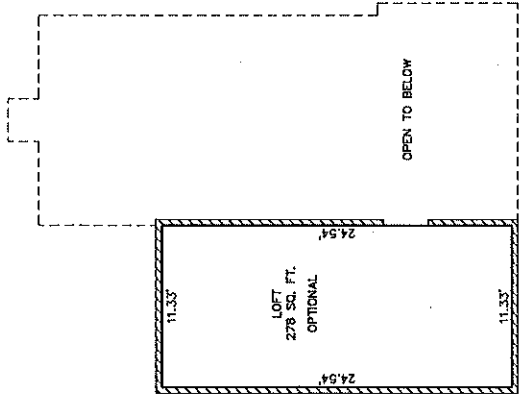


PREPARED BY MIDWESTERN CONSULTING, INC.
 DANNY M. BONGIOVANNI R.S. #245886
 PROPOSED DATED: 7-5-2000

UNITS 1 THRU 54
BASEMENT PLAN
 SCALE: 1"=4'



UNITS 1 THRU 54
FIRST FLOOR PLAN
 SCALE: 1"=4'



OPTIONAL 2ND FLOOR PLAN
 SCALE: 1"=4'

LEGEND

- GENERAL COMMON ELEMENT
- LIMITED COMMON ELEMENT
- LIMITS OF OWNERSHIP

NOTES

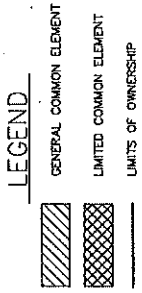
1. ALL CORNERS ARE 90°
2. UNITS 15, 16, 17, 18, 39, 40, 41, 42, 43, 44, 45, 46 HAVE WALKOUT BASEMENTS.



PREPARED BY MIDWESTERN CONSULTING, INC.

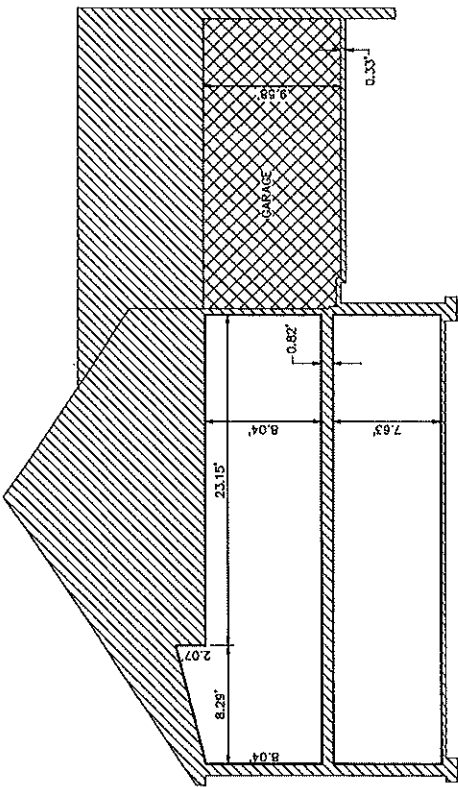
DANNY M. GONCIOVA, P.E. #24586

PROPOSED DATED: 7-8-2003

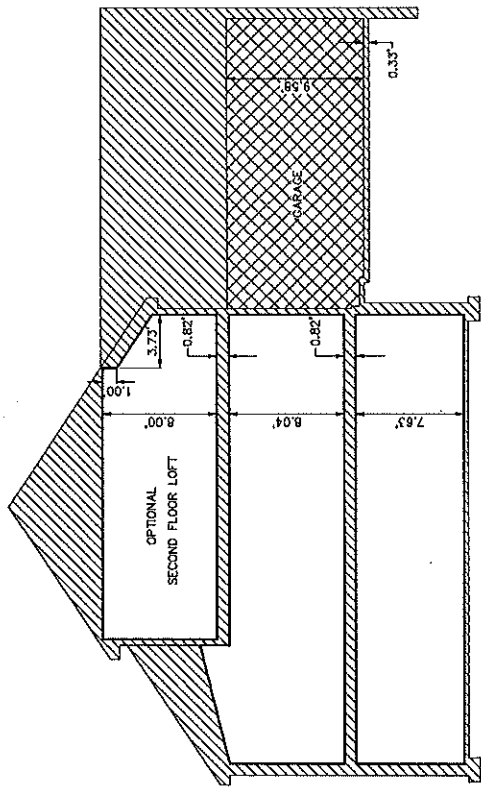


NOTES

1. ALL CORNERS ARE 90°



RANCH SECTION
 SCALE: 1"=4'



RANCH SECTION WITH OPTIONAL LOFT
 SCALE: 1"=4'

UNITS 1 THRU 54



PREPARED BY MIDWESTERN CONSULTING, INC.

DANRY M. BONGIOVANNI P.E. #24586

PROPOSED DATE: 7-8-2009